

PLAN SHOWING SURVEY OF 128 PARCELS OF LAND, BEING THE SUBDIVISION OF DEED OF CONVEYANCE 432 OF 2011 IN DEED BOOK VOLUME 6 OF 2011, FOLIOS 83 TO 94, SITUATE ALONG THE BENQUE VIEJO/MOLLEJON ROAD, WATER HOLE AREA, CAYO DISTRICT.

SURVEYED AT THE REQUEST OF BETTER IN BELIZE LIMITED

Ref.: L.U.A. CYO 1/10 (36), AMS No. 47971, dated 24th Jan. 2011.

NOTE:

Fd DENOTES FOUND
 O DENOTES WOODEN PEG
 □ DENOTES CONCRETE PILLAR
 SCALE FACTOR = 1.000191
 CONVERGENCE = 00° 35' 57"
 DISTANCES AND AZIMUTHS ARE GRID
 DISTANCES ARE IN METRES AND DECIMALS OF A METRE
 ORIGIN OF COORDINATES - Fd, CP, P1 ON ENTRY 3402, REG. 18
 ORIGIN OF AZIMUTHS - Fd, CP, P1 TO Fd, CP, G4 ON ENTRY 3402, REG. 18
 ALL ROAD RESERVE INSIDE SUBDIVISION ARE 40 FEET WIDE.

Surveyed by Jose E. DePaz (Dip. Land Surveying) Date _____
 Licensed Land Surveyor

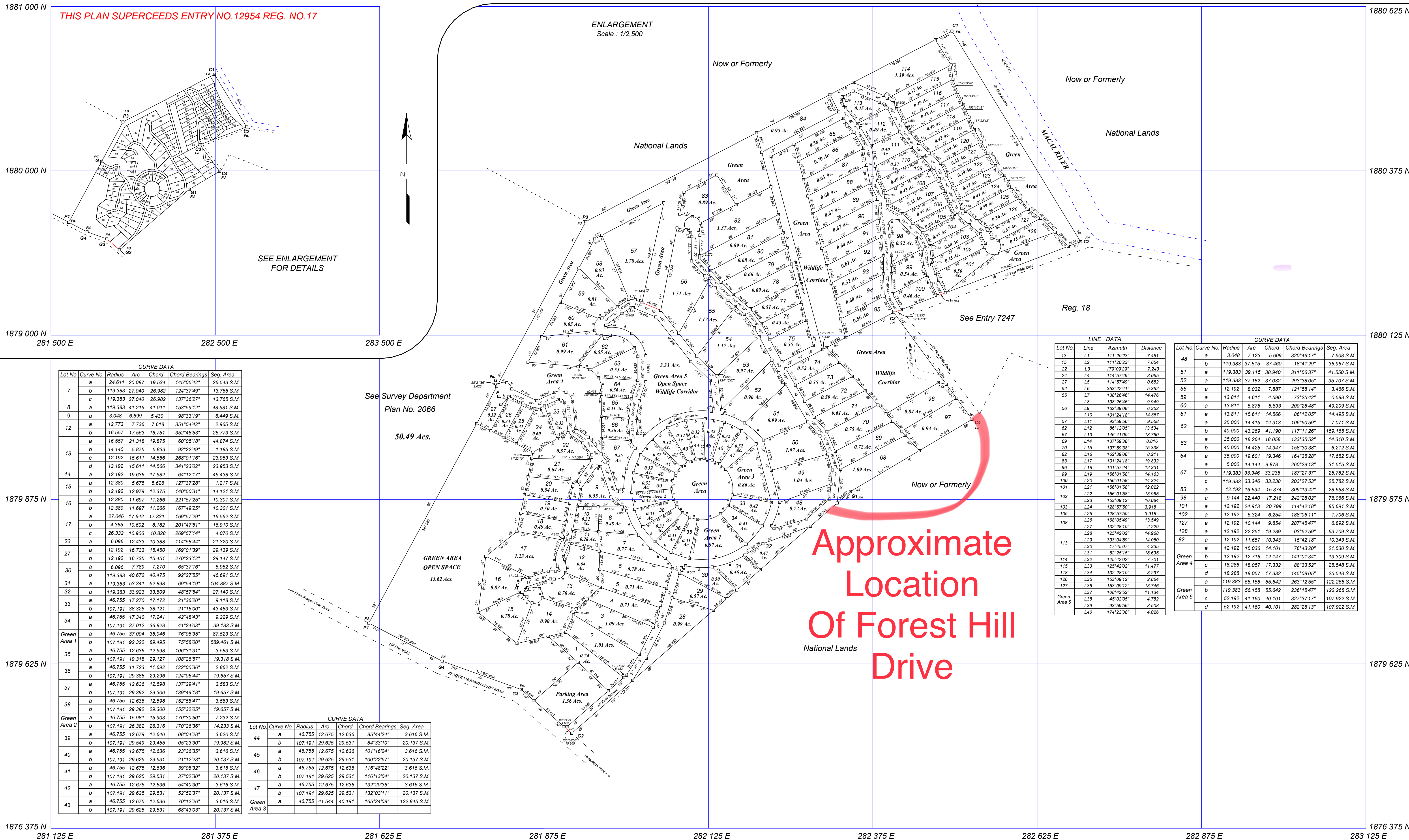
Scale: 1/10,000



STATIONS	EASTINGS	NORTHINGS
Fd P1	281 606.558	1879 627.144
Fd G4	281 720.022	1879 625.286
Fd G3	281 840.476	1879 586.025
Fd G2	281 917.076	1879 519.484
Fd G1	282 941.145	1879 887.270
Fd C4	282 526.091	1879 997.224
Fd C3	282 406.966	1880 159.772
Fd C2	282 691.129	1880 887.436
Fd C1	282 495.476	1880 587.823
Fd P3	281 938.482	1880 297.929
Fd G	281 854.400	1880 049.544

REGISTRATION	AUTHENTICATION	DATE
DATE RECEIVED _____	EXAMINED BY _____	_____
FILE REFERENCE _____	APPROVED BY _____	_____
ENTRY NO. _____ REG. NO. 17	AUTHENTICATED BY _____	_____

Commissioner of Lands and Surveys



THIS PLAN SUPERCEEDS ENTRY NO. 12954 REG. NO. 17

ENLARGEMENT
Scale: 1/2,500

SEE ENLARGEMENT FOR DETAILS

See Survey Department Plan No. 2066

Approximate Location Of Forest Hill Drive

Lot No.	Curve No.	Radius	Arc	Chord	Chord Bearings	Seg. Area
7	a	24.611	20.087	19.534	145°05'42"	26.543 S.M.
	b	119.383	27.040	26.982	124°37'49"	13.765 S.M.
	c	119.383	27.040	26.982	137°36'27"	13.765 S.M.
8	a	119.383	41.215	41.011	153°59'12"	48.581 S.M.
	b	3.048	6.699	5.430	98°33'19"	6.449 S.M.
12	a	12.773	7.736	7.618	351°54'42"	2.965 S.M.
	b	16.557	17.563	16.751	352°48'53"	25.773 S.M.
13	a	16.557	21.318	19.875	60°05'18"	44.874 S.M.
	b	14.140	5.875	5.833	92°22'49"	1.185 S.M.
14	a	12.192	15.611	14.566	268°01'16"	23.953 S.M.
	b	12.192	15.611	14.566	341°23'02"	23.953 S.M.
15	a	12.192	19.636	17.582	64°12'17"	45.438 S.M.
	b	12.380	5.675	5.626	127°37'28"	1.217 S.M.
16	a	12.192	12.979	12.375	140°50'31"	14.121 S.M.
	b	12.380	11.697	11.266	221°57'25"	10.301 S.M.
17	a	12.380	11.697	11.266	167°49'25"	10.301 S.M.
	b	27.046	17.642	17.331	169°57'29"	16.562 S.M.
23	a	4.365	10.602	8.182	201°47'51"	16.910 S.M.
	b	26.332	10.906	10.828	269°57'14"	4.070 S.M.
27	a	6.096	12.433	10.388	114°58'44"	21.320 S.M.
	b	12.192	16.733	15.450	169°01'39"	29.139 S.M.
30	a	12.192	16.733	15.451	270°23'12"	29.147 S.M.
	b	6.096	7.789	7.270	65°37'16"	5.952 S.M.
31	a	119.383	40.672	40.475	92°27'55"	46.691 S.M.
	b	119.383	53.341	52.898	69°54'19"	104.887 S.M.
32	a	119.383	33.923	33.809	48°57'54"	27.140 S.M.
	b	46.755	17.270	17.172	21°36'20"	9.118 S.M.
33	a	107.191	38.325	38.121	21°16'00"	43.483 S.M.
	b	46.755	17.340	17.241	42°48'43"	9.229 S.M.
34	a	107.191	37.012	36.828	41°24'03"	39.183 S.M.
	b	46.755	37.004	36.046	76°06'35"	87.523 S.M.
35	a	107.191	92.322	89.495	75°58'00"	589.461 S.M.
	b	46.755	12.636	12.598	106°31'31"	3.583 S.M.
36	a	107.191	19.318	19.127	108°26'57"	19.318 S.M.
	b	46.755	11.723	11.692	122°00'36"	2.862 S.M.
37	a	107.191	29.388	29.296	124°06'44"	19.657 S.M.
	b	46.755	12.636	12.598	137°29'41"	3.583 S.M.
38	a	107.191	29.392	29.300	139°49'18"	19.657 S.M.
	b	46.755	12.636	12.598	152°58'47"	3.583 S.M.
Green Area 2	a	107.191	29.392	29.300	155°32'05"	19.657 S.M.
	b	46.755	15.981	15.903	170°30'50"	7.232 S.M.
39	a	107.191	26.382	26.316	170°26'36"	14.233 S.M.
	b	46.755	12.679	12.640	08°04'28"	3.620 S.M.
40	a	107.191	29.625	29.531	84°33'10"	20.137 S.M.
	b	46.755	12.675	12.636	23°36'35"	3.616 S.M.
41	a	107.191	29.625	29.531	100°22'57"	20.137 S.M.
	b	46.755	12.675	12.636	116°48'22"	3.616 S.M.
42	a	107.191	29.625	29.531	37°02'30"	20.137 S.M.
	b	46.755	12.675	12.636	54°40'30"	3.616 S.M.
43	a	107.191	29.625	29.531	52°52'37"	20.137 S.M.
	b	46.755	12.675	12.636	70°12'26"	3.616 S.M.
Green Area 3	a	107.191	29.625	29.531	68°43'03"	20.137 S.M.
	b	46.755	12.675	12.636	85°44'24"	3.616 S.M.
44	a	107.191	29.625	29.531	84°33'10"	20.137 S.M.
	b	46.755	12.675	12.636	101°16'24"	3.616 S.M.
45	a	107.191	29.625	29.531	100°22'57"	20.137 S.M.
	b	46.755	12.675	12.636	116°48'22"	3.616 S.M.
46	a	107.191	29.625	29.531	116°13'04"	20.137 S.M.
	b	46.755	12.675	12.636	132°20'36"	3.616 S.M.
47	a	107.191	29.625	29.531	132°03'11"	20.137 S.M.
	b	46.755	14.544	14.191	165°34'08"	122.845 S.M.

Lot No.	Curve No.	Radius	Arc	Chord	Chord Bearings	Seg. Area
44	a	46.755	12.675	12.636	85°44'24"	3.616 S.M.
	b	107.191	29.625	29.531	84°33'10"	20.137 S.M.
45	a	46.755	12.675	12.636	101°16'24"	3.616 S.M.
	b	107.191	29.625	29.531	100°22'57"	20.137 S.M.
46	a	46.755	12.675	12.636	116°48'22"	3.616 S.M.
	b	107.191	29.625	29.531	116°13'04"	20.137 S.M.
47	a	46.755	12.675	12.636	132°20'36"	3.616 S.M.
	b	107.191	29.625	29.531	132°03'11"	20.137 S.M.
Green Area 3	a	46.755	14.544	14.191	165°34'08"	122.845 S.M.
	b	107.191	29.625	29.531	68°43'03"	20.137 S.M.

LINE DATA	CURVE DATA
13 L1 111°20'23" 7.451	48 a 3.048 7.123 5.609 320°46'17" 7.508 S.M.
15 L2 111°20'23" 7.654	b 119.383 37.615 37.460 18°41'29" 36.967 S.M.
22 L3 179°09'29" 7.243	51 a 119.383 39.115 38.940 311°56'37" 41.550 S.M.
24 L4 114°57'49" 3.055	b 119.383 37.182 37.032 293°38'05" 35.702 S.M.
27 L5 114°57'49" 0.652	52 a 12.192 8.032 7.887 121°58'14" 3.466 S.M.
52 L6 353°22'41" 5.352	a 13.811 4.611 4.590 73°25'42" 0.588 S.M.
55 L7 138°26'46" 14.478	b 40.000 43.269 41.190 117°11'26" 159.165 S.M.
L8 138°26'46" 9.949	59 a 13.811 5.875 5.833 200°28'48" 49.209 S.M.
L9 162°39'08" 6.352	60 a 13.811 15.611 14.566 86°12'05" 14.495 S.M.
L10 101°24'18" 14.357	a 35.000 14.415 14.313 106°50'59" 7.071 S.M.
L11 92°59'56" 9.558	b 40.000 14.425 14.347 158°30'38" 6.212 S.M.
L12 86°12'05" 13.634	63 a 35.000 18.264 18.058 133°35'52" 14.310 S.M.
L13 146°41'00" 13.760	b 40.000 14.425 14.347 164°35'28" 17.652 S.M.
L14 137°59'38" 8.816	64 a 35.000 19.601 19.346 164°35'28" 17.652 S.M.
L15 137°59'38" 15.338	a 5.000 14.144 9.878 260°29'13" 31.515 S.M.
L16 162°39'08" 8.211	b 119.383 33.346 33.238 187°27'37" 25.782 S.M.
L17 101°24'18" 19.832	a 119.383 33.346 33.238 203°27'53" 25.782 S.M.
L18 101°57'24" 12.331	67 b 12.192 16.634 15.374 309°13'42" 28.658 S.M.
L19 156°01'58" 14.163	a 9.144 22.440 17.218 242°28'02" 76.066 S.M.
L20 156°01'58" 14.324	b 12.192 16.634 15.374 309°13'42" 28.658 S.M.
L21 156°01'58" 12.022	83 a 9.144 22.440 17.218 242°28'02" 76.066 S.M.
L22 156°01'58" 13.955	b 12.192 16.634 15.374 309°13'42" 28.658 S.M.
L23 153°09'12" 16.084	98 a 12.192 24.913 20.799 114°42'18" 85.691 S.M.
L24 128°57'50" 3.918	101 a 12.192 6.324 6.254 188°06'11" 1.706 S.M.
L25 128°57'50" 3.918	b 12.192 10.144 9.854 287°45'47" 6.892 S.M.
L26 168°05'49" 13.549	108 a 12.192 22.251 19.289 03°52'59" 63.703 S.M.
L27 132°28'10" 2.229	82 a 12.192 11.657 10.343 15°42'18" 10.343 S.M.
L28 125°42'02" 14.965	a 12.192 15.036 14.101 76°43'20" 21.530 S.M.
L29 333°04'59" 14.050	b 12.192 12.716 12.147 141°01'34" 13.309 S.M.
L30 17°45'07" 4.335	Green Area 4 c 18.288 18.057 17.332 145°08'05" 25.548 S.M.
L31 62°25'15" 18.635	a 119.383 56.158 55.642 263°12'55" 122.268 S.M.
L32 125°42'02" 7.701	b 119.383 56.158 55.642 236°15'47" 122.268 S.M.
L33 125°42'02" 11.477	Green Area 5 c 52.192 41.160 40.101 327°37'17" 107.922 S.M.
L34 132°28'10" 3.297	a 52.192 41.160 40.101 282°26'13" 107.922 S.M.
L35 153°09'12" 2.864	
L36 153°09'12" 13.748	
L37 108°42'52" 11.134	
L38 45°02'05" 4.782	
L39 83°39'58" 3.508	
L40 174°33'38" 4.026	