

**PLAN SHOWING SURVEY OF 128 PARCELS OF LAND, BEING THE SUBDIVISION OF DEED OF CONVEYANCE 432 OF 2011 IN DEED BOOK VOLUME 6 OF 2011, FOLIOS 83 TO 94, SITUATE ALONG THE BENQUE VIEJO/MOLLEJON ROAD, WATER HOLE AREA, CAYO DISTRICT.**

**SURVEYED AT THE REQUEST OF BETTER IN BELIZE LIMITED**  
 Ref: L.U.A. CYO 1/10 (36), AMS No. 47971, dated 24th Jan. 2011.

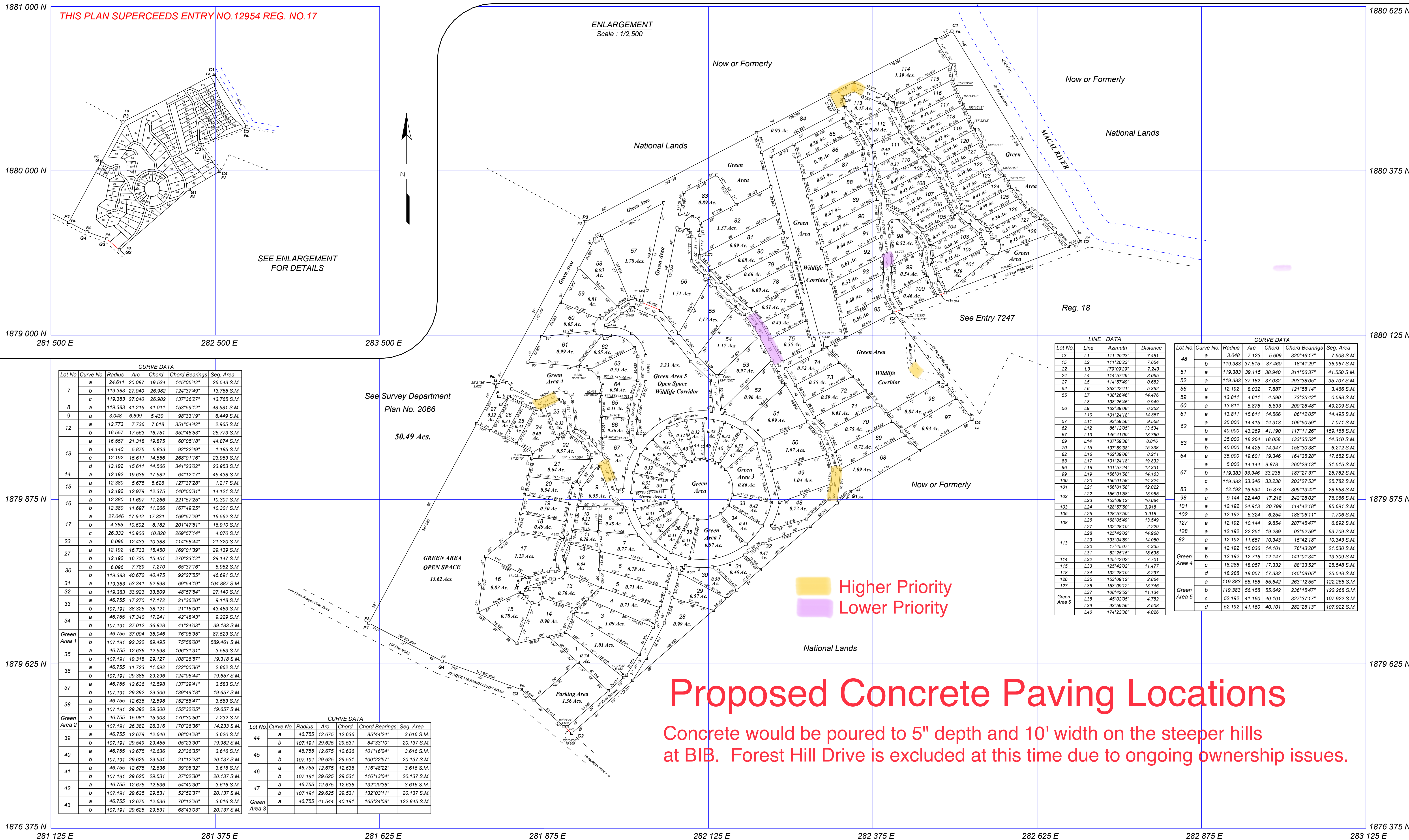
**NOTE:**  
 Fd DENOTES FOUND  
 O DENOTES WOODEN PEG  
 □ DENOTES CONCRETE PILLAR  
 SCALE FACTOR = 1.000191  
 CONVERGENCE = 00° 35' 57"  
 DISTANCES AND AZIMUTHS ARE GRID  
 DISTANCES ARE IN METRES AND DECIMALS OF A METRE  
 ORIGIN OF COORDINATES - Fd, CP P1 ON ENTRY 3402, REG. 18  
 ORIGIN OF AZIMUTHS - Fd, CP P1 TO Fd, CP G4 ON ENTRY 3402, REG. 18  
 ALL ROAD RESERVE INSIDE SUBDIVISION ARE 40 FEET WIDE.

Surveyed by Jose E. DePaz (Dip. Land Surveying) Date \_\_\_\_\_  
 Licensed Land Surveyor  
 Scale: 1/10,000

STATIONS	EASTINGS	NORTHINGS
Fd P1	281 608.558	1879 677.144
Fd G4	281 720.022	1879 625.286
Fd G3	281 840.476	1879 586.025
Fd G2	281 917.076	1879 519.484
Fd G1	282 941.145	1879 887.270
Fd C4	282 526.091	1879 997.224
Fd C3	282 406.966	1880 159.772
Fd C2	282 691.129	1880 887.436
Fd C1	282 495.476	1880 587.823
Fd P3	281 938.482	1880 297.929
Fd G	281 854.400	1880 049.544

REGISTRATION	AUTHENTICATION	DATE
DATE RECEIVED _____	EXAMINED BY _____	_____
FILE REFERENCE _____	APPROVED BY _____	_____
ENTRY NO. _____ REG. NO. <b>17</b>	AUTHENTICATED BY _____	_____

Commissioner of Lands and Surveys



THIS PLAN SUPERCEEDS ENTRY NO. 12954 REG. NO. 17

SEE ENLARGEMENT FOR DETAILS

Lot No.	Curve No.	Radius	Arc	Chord	Chord Bearings	Seg. Area
7	a	24.611	20.087	19.534	145°05'42"	26.543 S.M.
	b	119.383	27.040	26.982	124°37'49"	13.765 S.M.
	c	119.383	27.040	26.982	137°36'27"	13.765 S.M.
8	a	119.383	41.215	41.011	153°59'12"	48.581 S.M.
	b	3.048	6.699	5.430	98°33'19"	6.449 S.M.
12	a	12.773	7.736	7.618	351°54'42"	2.965 S.M.
	b	16.557	17.563	16.751	352°48'53"	25.773 S.M.
13	a	16.557	21.318	19.875	60°05'18"	44.874 S.M.
	b	14.140	5.875	5.833	92°22'49"	1.185 S.M.
14	a	12.192	15.611	14.566	268°01'16"	23.953 S.M.
	b	12.192	15.611	14.566	341°23'02"	23.953 S.M.
15	a	12.192	19.636	17.582	64°12'17"	45.438 S.M.
	b	12.380	5.675	5.626	127°37'28"	1.217 S.M.
16	a	12.192	12.979	12.375	140°50'31"	14.121 S.M.
	b	12.380	11.697	11.266	221°57'25"	10.301 S.M.
17	a	12.380	11.697	11.266	167°49'25"	10.301 S.M.
	b	27.046	17.642	17.331	169°57'29"	16.562 S.M.
23	a	4.365	10.602	8.182	201°47'51"	16.910 S.M.
	b	26.332	10.906	10.828	269°57'14"	4.070 S.M.
27	a	6.096	12.433	10.388	114°58'44"	21.320 S.M.
	b	12.192	16.733	15.450	169°01'39"	29.139 S.M.
30	a	12.192	16.733	15.451	270°23'12"	29.147 S.M.
	b	6.096	7.789	7.270	65°37'16"	5.952 S.M.
31	a	119.383	40.672	40.475	92°27'55"	46.691 S.M.
	b	119.383	53.341	52.898	69°54'19"	104.887 S.M.
32	a	119.383	33.923	33.809	48°57'54"	27.140 S.M.
	b	46.755	17.270	17.172	21°36'20"	9.118 S.M.
33	a	107.191	38.325	38.121	21°16'00"	43.483 S.M.
	b	46.755	17.340	17.241	42°48'43"	9.229 S.M.
34	a	107.191	37.012	36.828	41°24'03"	39.183 S.M.
	b	46.755	37.004	36.046	76°06'35"	87.523 S.M.
Green Area 1	a	107.191	92.322	89.495	75°58'00"	589.461 S.M.
	b	46.755	12.636	12.598	106°31'31"	3.583 S.M.
35	a	107.191	19.318	19.127	108°26'57"	19.318 S.M.
	b	46.755	11.723	11.692	122°00'36"	2.862 S.M.
36	a	107.191	29.388	29.296	124°06'44"	19.657 S.M.
	b	46.755	12.636	12.598	137°29'41"	3.583 S.M.
37	a	107.191	29.392	29.300	139°49'18"	19.657 S.M.
	b	46.755	12.636	12.598	152°58'47"	3.583 S.M.
38	a	107.191	29.392	29.300	155°32'05"	19.657 S.M.
	b	46.755	15.981	15.903	170°30'50"	7.232 S.M.
Green Area 2	a	107.191	26.382	26.316	170°26'36"	14.233 S.M.
	b	46.755	12.679	12.640	08°04'28"	3.620 S.M.
39	a	107.191	29.625	29.531	84°33'10"	20.137 S.M.
	b	46.755	12.675	12.636	23°36'35"	3.616 S.M.
40	a	107.191	29.625	29.531	101°16'24"	20.137 S.M.
	b	46.755	12.675	12.636	116°48'22"	3.616 S.M.
41	a	107.191	29.625	29.531	116°13'04"	20.137 S.M.
	b	46.755	12.675	12.636	132°20'36"	3.616 S.M.
42	a	107.191	29.625	29.531	132°03'11"	20.137 S.M.
	b	46.755	12.675	12.636	68°43'03"	20.137 S.M.
43	a	107.191	29.625	29.531	68°43'03"	20.137 S.M.
	b	46.755	12.675	12.636	85°44'24"	3.616 S.M.

Lot No.	Curve No.	Radius	Arc	Chord	Chord Bearings	Seg. Area
44	a	46.755	12.675	12.636	85°44'24"	3.616 S.M.
	b	107.191	29.625	29.531	84°33'10"	20.137 S.M.
45	a	46.755	12.675	12.636	101°16'24"	3.616 S.M.
	b	107.191	29.625	29.531	100°22'57"	20.137 S.M.
46	a	46.755	12.675	12.636	116°48'22"	3.616 S.M.
	b	107.191	29.625	29.531	116°13'04"	20.137 S.M.
47	a	46.755	12.675	12.636	132°20'36"	3.616 S.M.
	b	107.191	29.625	29.531	132°03'11"	20.137 S.M.
Green Area 3	a	46.755	41.544	40.191	165°34'08"	122.845 S.M.
	b	107.191	29.625	29.531	165°34'08"	122.845 S.M.

LINE DATA	CURVE DATA
13 L1	48 a
13 L2	48 b
22 L3	51 a
22 L4	51 b
27 L5	52 a
54 L6	56 a
55 L7	59 a
56 L8	60 a
57 L9	61 a
57 L10	62 a
57 L11	62 b
62 L12	63 a
67 L13	64 a
69 L14	67 a
70 L15	83 a
82 L16	98 a
83 L17	101 a
96 L18	102 a
99 L19	102 b
100 L20	108 a
101 L21	108 b
101 L22	113 a
101 L23	113 b
103 L24	127 a
105 L25	128 a
108 L26	128 b
108 L27	128 c
108 L28	128 d
108 L29	128 e
113 L30	128 f
113 L31	128 g
114 L32	128 h
115 L33	128 i
118 L34	128 j
126 L35	128 k
127 L36	128 l
Green Area 3 L37	Green Area 3 a
Green Area 3 L38	Green Area 3 b
Green Area 3 L39	Green Area 3 c
Green Area 3 L40	Green Area 3 d

**Proposed Concrete Paving Locations**  
 Concrete would be poured to 5" depth and 10' width on the steeper hills at BIB. Forest Hill Drive is excluded at this time due to ongoing ownership issues.